



Product insight Lumesse TalentLink

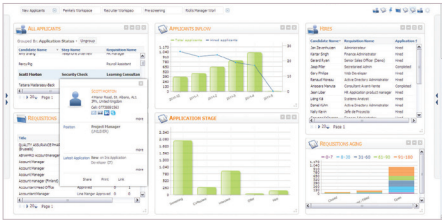
Go global. Think local. Find the best.



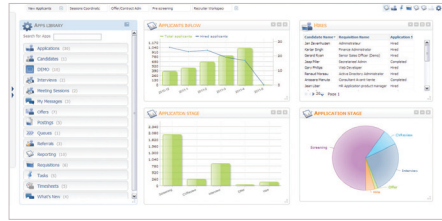
It's never been more important to have a global talent attraction strategy that uses multiple channels to find and secure the very best people. Localised into more than 20 languages and based on state of the art Web 2.0 technology, Lumesse TalentLink is a true on-demand global talent acquisition solution that helps companies of all sizes to find and acquire local talent.

Lumesse TalentLink is built on a feature-rich SaaS platform suitable for organisations of all sizes. It's easy to implement, integrates seamlessly with your existing systems, updates regularly, and meets stringent data security and privacy standards. With a great user experience based on easy to configure Apps (application modules) you can create personalised workspaces that fit around the way you work:

- **Collaborate for success:** Lumesse TalentLink brings all stakeholders together and drives collaboration between candidates, recruiters, HR professionals, hiring managers, and agencies.
- **Source great candidates:** Use your branded career-sites, preferred-supplier recruitment agencies, job boards, outsourcing companies, or 200+ social media sites connected to Lumesse TalentLink, to attract great people. Lumesse TalentLink ensures you have all candidates in one place and helps you create global talent pools.
- **Manage compliance:** Be safe in the knowledge that your organisation complies with local employment and data protection legislation, as well as your own internal commitments on diversity.
- **Work smart:** Lumesse TalentLink is the first Talent Acquisition solution designed with an apps based model. Define your own personalised workspaces with the apps of your choice to support your daily activities and workflow.
- **Get full insight:** Lumesse TalentLink supports all types of recruitment, from external, internal and campus to contingent workforce. With its extensive reporting and analytics capabilities, you have real-time insight into all your sourcing processes.
- **Focus on the right things:** Lumesse TalentLink streamlines your recruitment process with powerful and intuitive technology that reduces your cost-to-hire, improves efficiency and makes administration tasks easy. You finally get enough time to spend with your candidates to make great hiring decisions.
- **Deliver a great candidate experience:** Give all potential hires the personal treatment. Make sure your responses are individual, branded, accurate and fast. Don't lose a great candidate because the process is too difficult - guide them through to success.
- **Increase your visibility:** Build high-quality career portals that appeal to both internal and external candidates, allowing them to quickly and easily track their application status.
- **Connect effortlessly:** Lumesse TalentLink can easily be extended with capabilities from a wide range of recruitment service providers, such as assessment centres or background checking.
- **Robust and future proof:** Lumesse TalentLink is delivered on a SaaS model, with easy access, via your web browser, anywhere you want. Built on robust, state-of-the-art technology, you benefit from regular free enhancements that ensure you keep up with the latest innovations in recruitment and add value to your investment, over and over again.
- **Configure everything you need:** Lumesse TalentLink is easy to deploy, implement and optimise - a feature-rich solution with extensive configurability, supporting each step in your recruitment process. Our local consultants understand your sourcing challenges and help to get you up to speed in the shortest time.



Lumesse TalentLink fully leverages the benefits of cloud computing, offering an engaging new user experience and a world of application modules (Apps) that can be added to a personalised workspace.



Lumesse TalentLink's flexibility supports the unique working styles of each individual recruiter, making it easy to design your own personalised workspaces.

“ We needed a talent acquisition solution that is as flexible as we are - we're delighted with what Lumesse TalentLink has enabled us to achieve. ”
Ochre House

Lumesse Talent Management

Lumesse Talent Management is the product of many years' experience in helping great businesses unlock their human potential. A true global enterprise solution, Lumesse Talent Management combines deep functionality, powerful business insights and a great user experience:

- Fully integrated modules for HR Management, Performance Management, Compensation Management, Skills & Competency Management, Career & Succession Planning, Learning Management and HR Analytics.
- Flexibility to support individual talent processes or end-to-end talent management.
- Instant access to global, country and functional talent information with powerful HR analytics and reporting.
- Intuitive and easy Internet-based access in any one of over 30 languages.
- Secure data storage with rigorously controlled access, comprehensive user management, and configurable workflows.
- Support from experienced teams around the world who speak your language and understand your culture and business practices.

About

Lumesse is the only global company making talent management solutions work locally. We help customers around the world to implement successful local talent management initiatives that identify, nurture and develop the right people, in the right place, at the right time. Our multi-cultural background and presence means we understand how to deliver talent solutions that work the way our customers work, as individuals and as teams, because no two people, organisations or cultures are the same. We regard differences as strengths, not as obstacles.

2,000 customers work with us in over 70 countries because they recognise that commitment, innovation and value only come from people. We help customers to unlock and inspire that human potential in their businesses. Our integrated talent management solutions are comprehensive, intuitive, secure and fully internationalised into over 50 languages.

We have Lumesse offices and partners in more than 40 countries, covering EMEA, the Americas and Asia-Pacific. To find your nearest office and talk to someone who speaks your language, visit:

www.lumesse.com/get-in-touch



© Lumesse AS All rights reserved. Unless explicitly permitted by Lumesse AS or by applicable copyright law, no part of this publication may be reproduced, stored in a retrieval system or transmitted in any form or by any means, electronic or mechanical, including photocopying, recording, or otherwise.